

## Installation Instructions

### ! IMPORTANT

IP66 IK10   

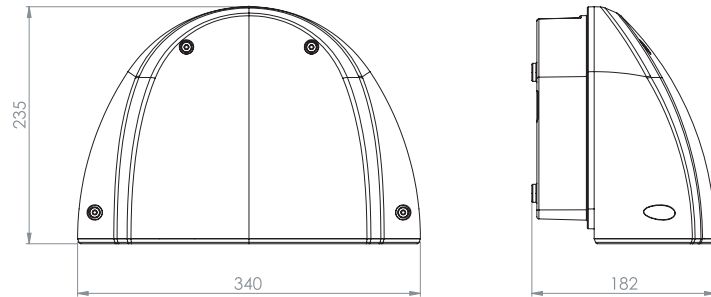
230VAC 50Hz

- DISCONNECT ELECTRICAL SUPPLY BEFORE INSTALLATION OR SERVICING.
- THIS PRODUCT MUST BE EARTHED.
- THIS PRODUCT IS DESIGNED TO OPERATE OUTDOORS. IF REQUIRED TO BE USED INDOORS PLEASE CONSULT DW WINDSOR.
- THE LIGHT SOURCE FITTED IN THIS LUMINAIRE SHALL ONLY BE REPLACED BY DW WINDSOR
- DO NOT LOOK DIRECTLY AT LED LIGHT SOURCE ( NON-OPAL VERSION )
- THE LUMINAIRE SHOULD BE POSITIONED SO THAT PROLONGED STARING INTO THE LUMINAIRE AT DISTANCE CLOSER THAN 1.2M IS PREVENTED
- DO NOT REMOVE THE GROMMITS OR CABLE GLAND; THEY ARE INTEGRAL TO THE IP RATING OF THE PRODUCT.

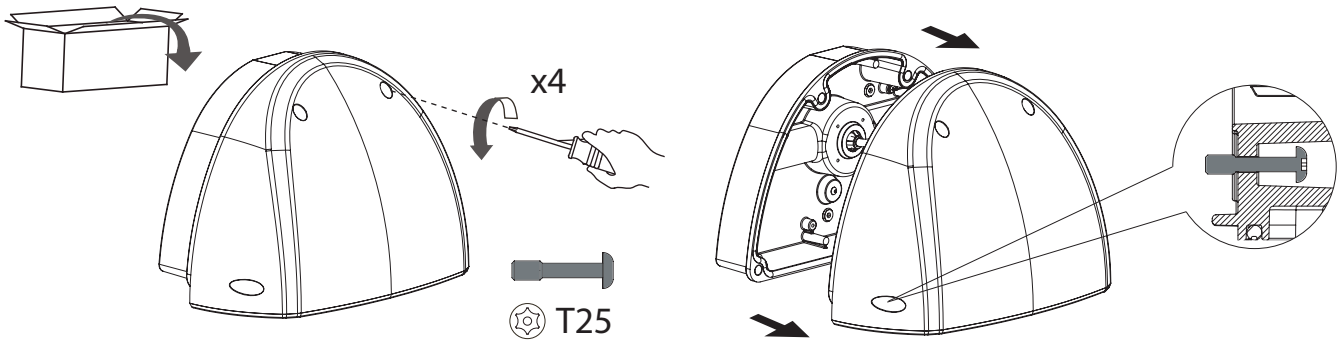
### Product Details

	Max. Weight (kg)
Kirium Wall	3.6
Kirium Wall with Emergency	4.4

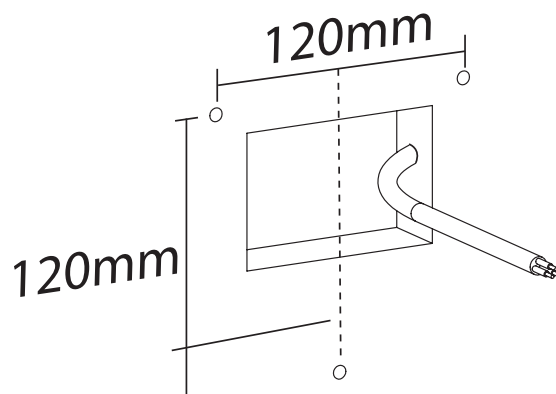
	Power Ranges (Watts)
16 LED	12 - 37W



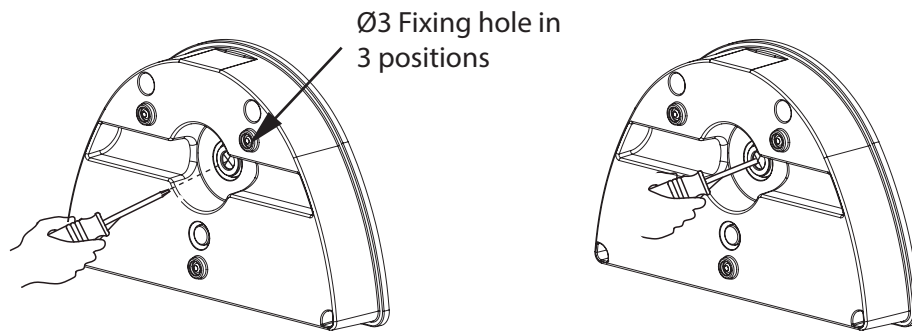
### A1



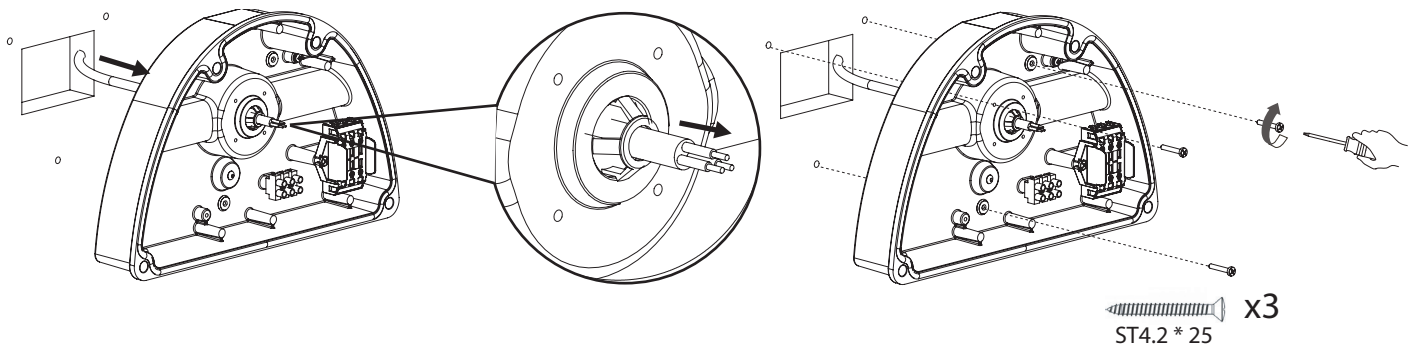
### A2



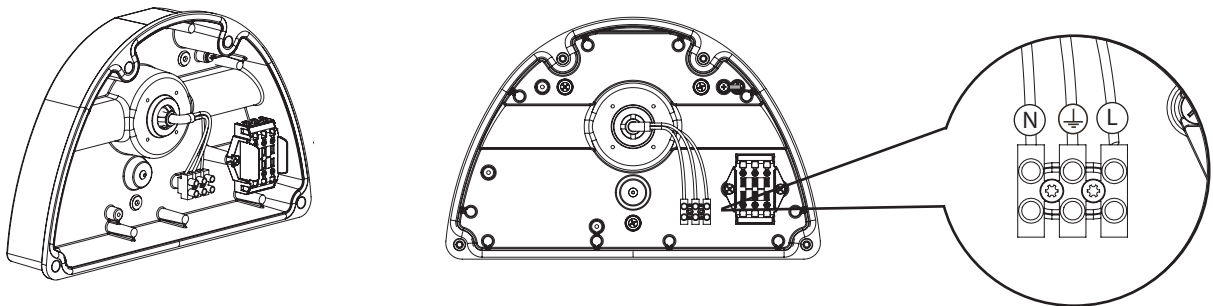
A3



A4



A5



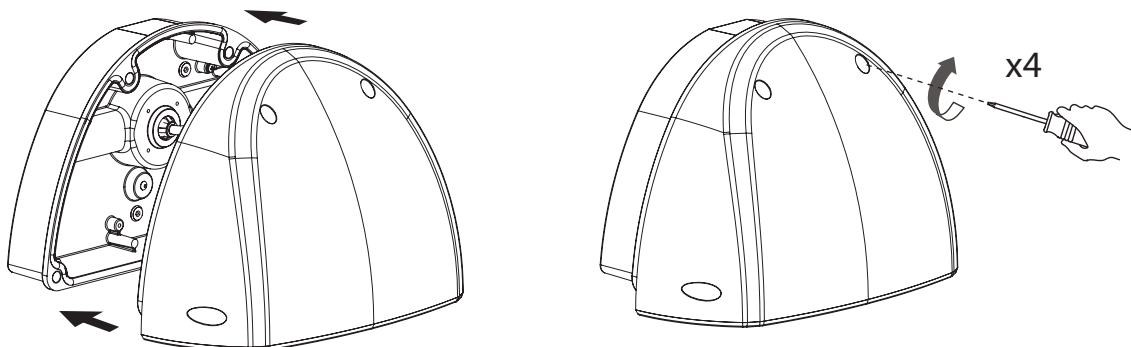
A6



**FOR PRODUCTS WITH EMERGENCY OPTION**

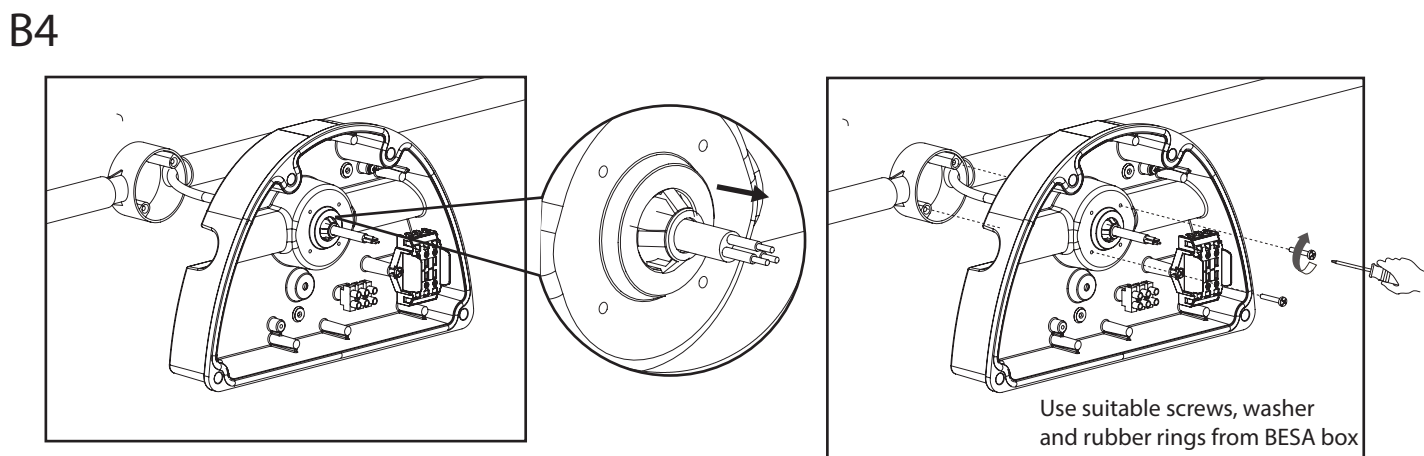
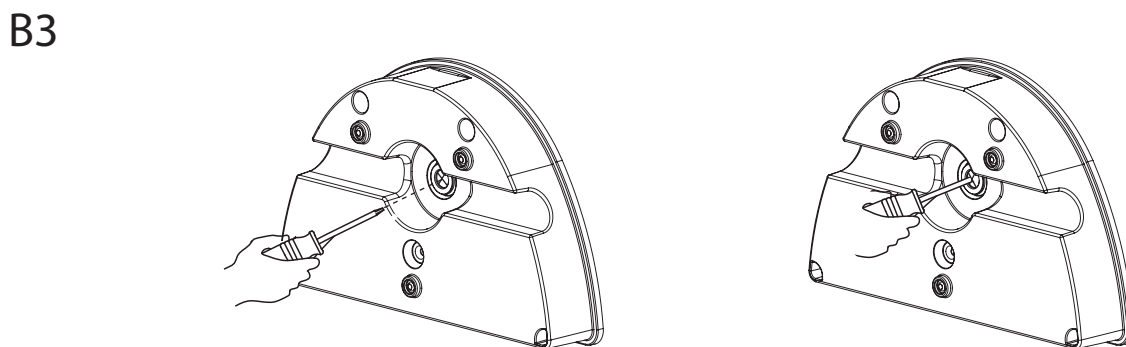
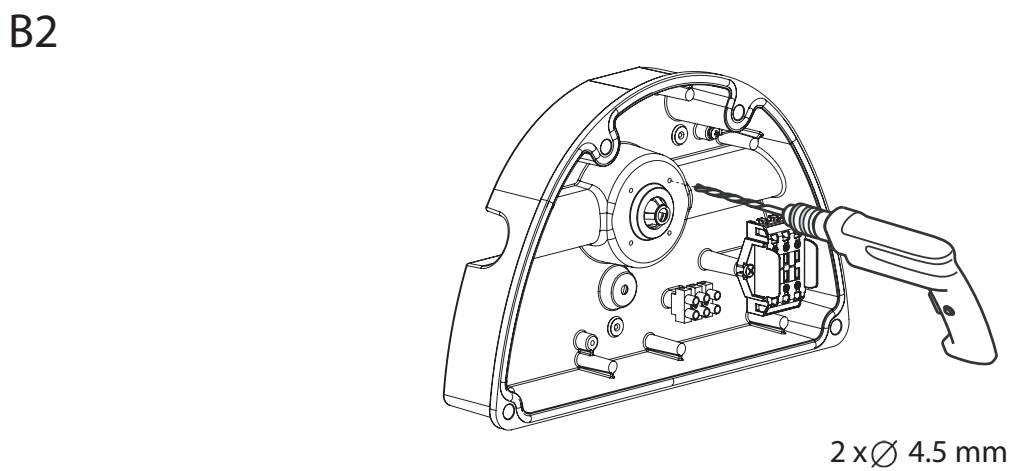
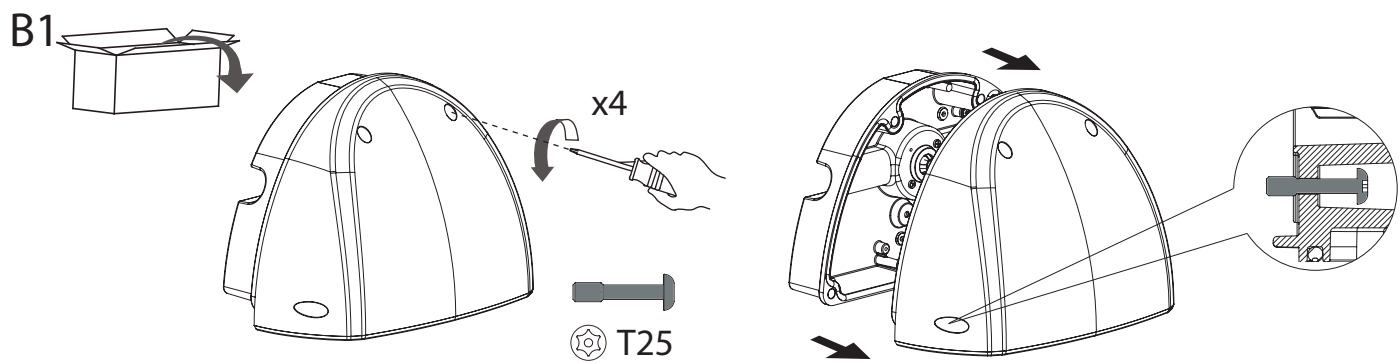
Battery connections are detached during the transportation to avoid battery drainage.

Attach both black and red wires to the corresponding battery terminals before fitting the front section.

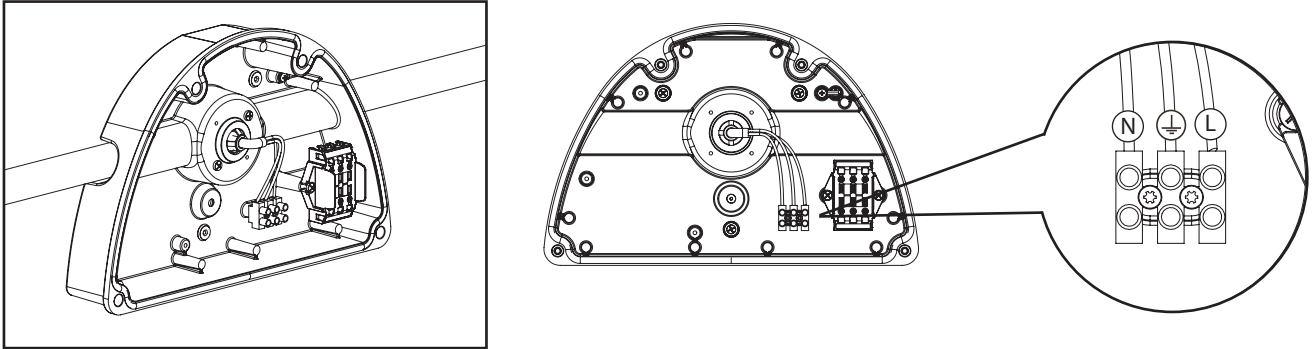


# Kirium Wall

BESA mount



B5



B6



**FOR PRODUCTS WITH EMERGENCY OPTION**

Battery connections are detached during the transportation to avoid battery drainage.

Attach both black and red wires to the corresponding battery terminals before fitting the front section.

