

Components of the 3p-Technology system

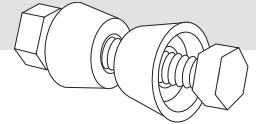
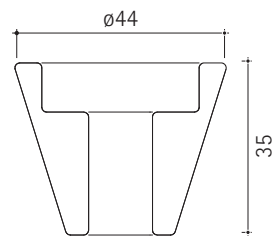
1. Clamping bolts

Clamping bolt set (standard)

BO 3PT T 460 CHX XX XX

- Tightens to give a robust system
- Firm, stable bollard base
- Hexagonal head bolt M12 with nut
- Material: stainless steel grade 304

Cross-section

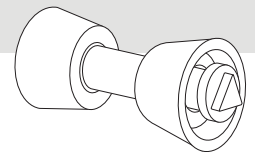
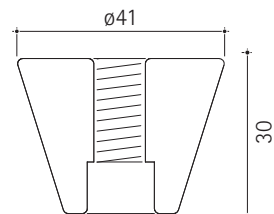


Clamping bolt set with triangular head (optional)

BO 3PT T 460 CTR XX XX

- Optional clamping with triangular screw head
- One clamping bolt with thread for triangular head screw M12
- Material: stainless steel grade 304

Cross-section

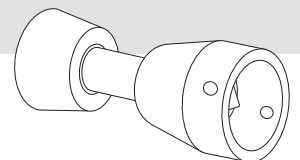
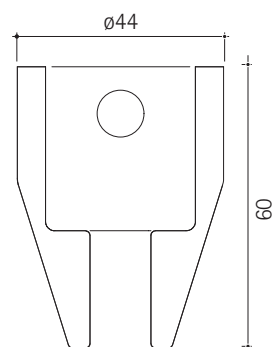


Lengthened clamping bolt (optional)

BO 3PT T 460 CEX XX XX

- Optional padlock protection to prevent unauthorised removal of product
- Can be used with either the triangular screw or hexagonal bolt head clamping method
- Material: stainless steel grade 304

Cross-section

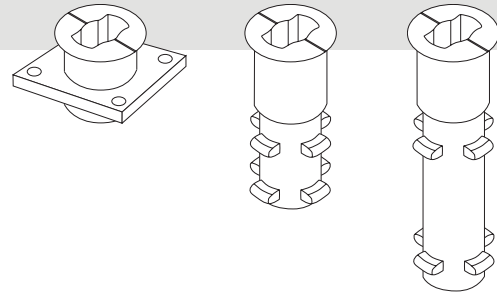


Components of the 3p-Technology

2. Ground shells

Ground shell 300mm (standard), 500mm

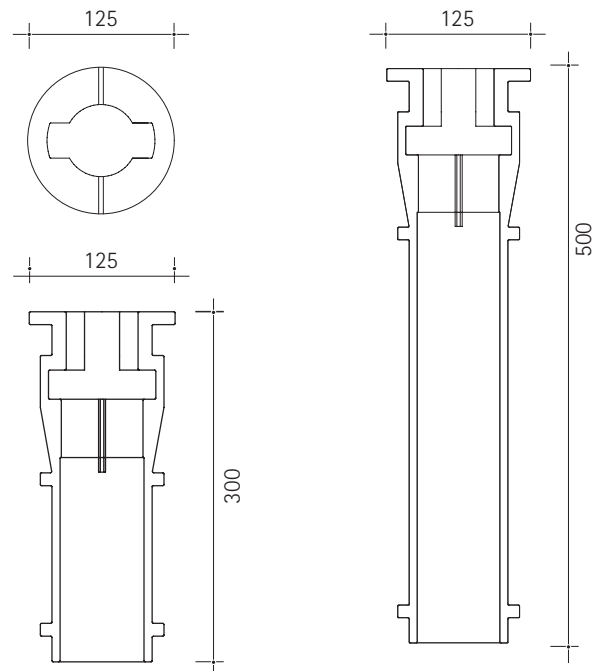
- Extremely robust shells are embedded in concrete for a long-lasting solution



Ground shell 300mm (standard)

BO 3PT T G60 GRS XX 03

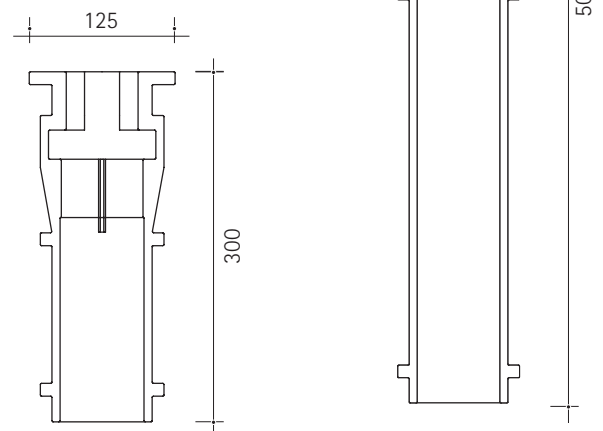
- Standard
- Weight: 7.2kg
- Material: galvanised cast iron



Ground shell 500mm

BO 3PT T G60 GRS XX 05

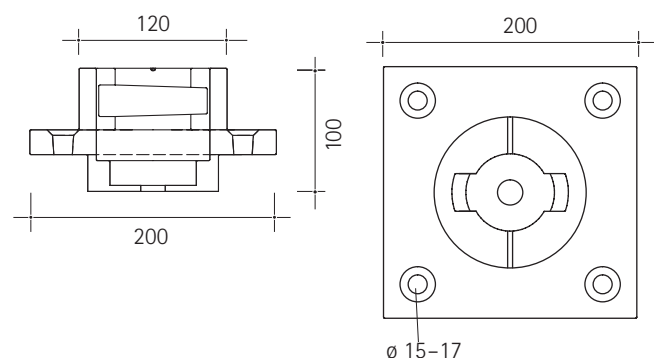
- Optional for added stability
- Weight: 8.6kg
- Material: galvanised cast iron



Ground shell 100mm

BO 3PT T G60 GRS XX 01

- Optional as a special solution if there is not enough depth for installation
- Weight: 7.2kg
- Material: galvanised cast iron



Components of the 3p-Technology

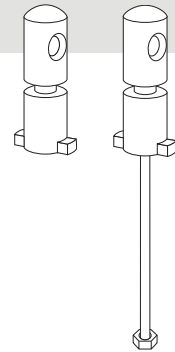
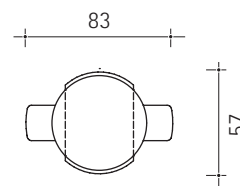
3. Junction pieces

Junction piece (standard)

BO 3PT T G60 JUS XX 01

- Attaches product to its ground shell
- Integral element with a pre-determined breaking point
- Can be quickly replaced if damaged
- Material: galvanised cast iron

Plan view

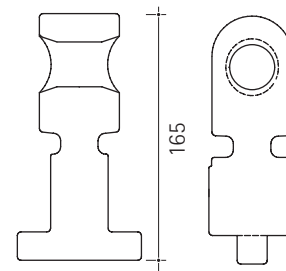


Junction piece with anti-roll device (optional)

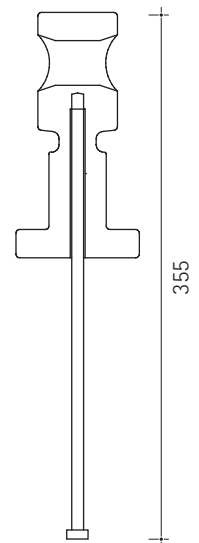
BO 3PT T G60 JUR XX 03

- Features as the standard junction piece
- Optional anti-roll device prevents product rolling away

Cross-section (standard)



Cross-section (anti-roll)

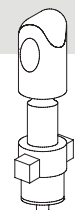
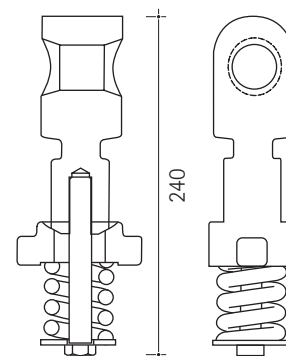


Junction piece with steel spring (3p-Flex) (optional)

BO 3PT T G60 JUF XX XX

- Product returns to original position after impact (flexes 8°-10°)
- Features as the standard junction piece (without anti-roll device)
- Material: galvanised cast iron

Cross-section



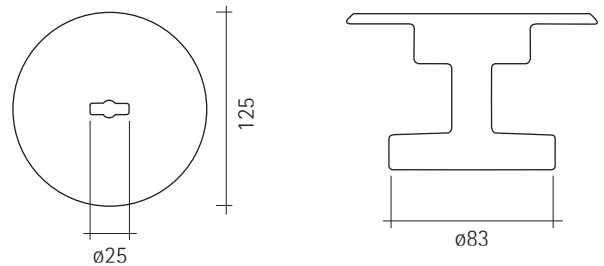
Components of the 3p-Technology

4. Base covers

Base cover (standard)

BO 3PT T 020 COV XX XX

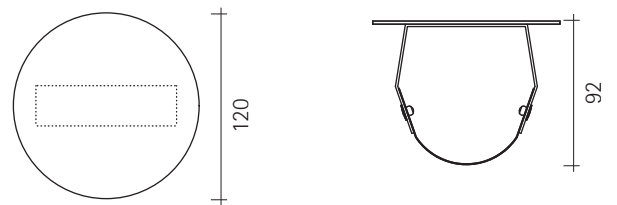
- Reduces danger of tripping
- Prevents dirt getting into ground shell
- Material: cast aluminium, powder coated DB703



Base cover with spring

BO 3PT T 320 COV XX XX

- Base cover with spring
- Can only be removed with a flat object (screwdriver)
- Material: galvanised steel



Maintenance with 3p-Technology is quick and easy

